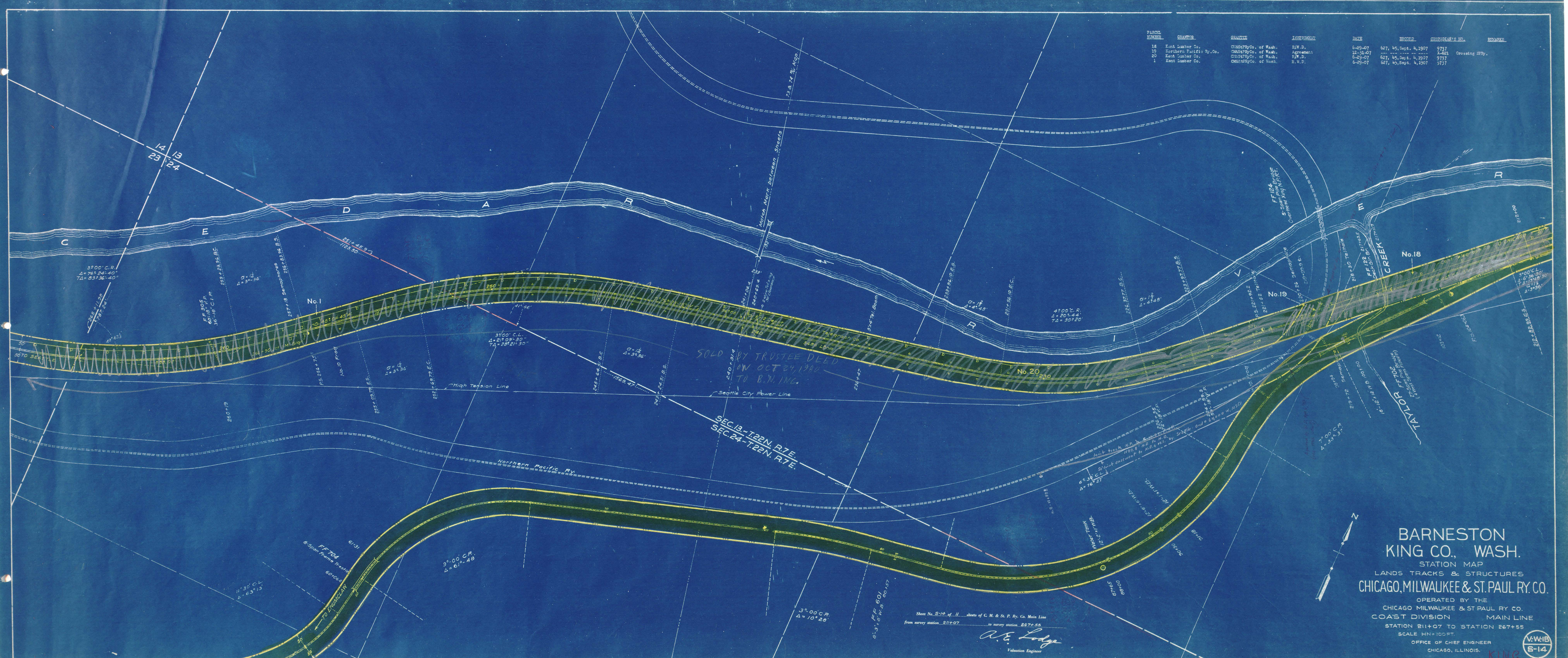


PARCEL NUMBER	GRANTOR	GRANTEE	INSTRUMENT	DATE	RECORD	CUSTOMER'S NO.	REMARKS
18	Kent Lumber Co.	CHAS. FRY Co. of Wash.	R.W.D.	6-29-07	627, 45, Sept. 4, 1907	9737	
19	Northern Pacific Ry. Co.	CHAS. FRY Co. of Wash.	Agreement	12-31-07		X-221	Crossing Jcty.
20	Kent Lumber Co.	CHAS. FRY Co. of Wash.	R.W.D.	6-29-07	627, 45, Sept. 4, 1907	9737	
1	Kent Lumber Co.	CHAS. FRY Co. of Wash.	R.W.D.	6-29-07	627, 45, Sept. 4, 1907	9737	



SOLD BY TRUSTEE DEED
IN OCT 24, 1910
TO B.W. INC.

SEC. 13 - T22N. R.7E.
SEC. 24 - T22N. R.7E.

Sheet No. 5-14 of 11 sheets of C. M. & St. P. Ry. Co. Main Line
from survey station 211+07 to survey station 267+55

A.E. Lodge
Valuation Engineer

**BARNESTON
KING CO., WASH.**
STATION MAP
LANDS TRACKS & STRUCTURES
CHICAGO, MILWAUKEE & ST. PAUL RY. CO.
OPERATED BY THE
CHICAGO MILWAUKEE & ST. PAUL RY. CO.
COAST DIVISION MAIN LINE
STATION 211+07 TO STATION 267+55
SCALE 1" = 100 FT.
OFFICE OF CHIEF ENGINEER
CHICAGO, ILLINOIS.

